



Pie Basket This brown ash basket has a heavy ash handle and narrow gauge ash weavers. This basket was designed to hold pie.

Napkin Rings These are made from sweetgrass with ash standards. There is a very prominent ribbon curl. These were used as rings on cloth napkins.



Porcupine Quill Box Made from birchbark with dyed porcupine quills for the flower, and non-dyed quills for the sides and fringe. This box has sweetgrass rim.



Brown Ash Button Basket with sweetgrass bindings on rim, and on lid. This basket has a spiral weave on the bottom of the basket.

Sweetgrass Flat This basket has both braided sweetgrass and straight sweetgrass. These basket are very fragrant on humid days.



Flower Basket Made from brown ash and braided sweet grass.



Sewing Basket This basket has a braided sweetgrass loop design on the outside. Smaller baskets are affixed to the interior for pin cushions and storage.

Candy Basket This basket has porcupine weave, at top and bottom, and diamond curl in the middle.



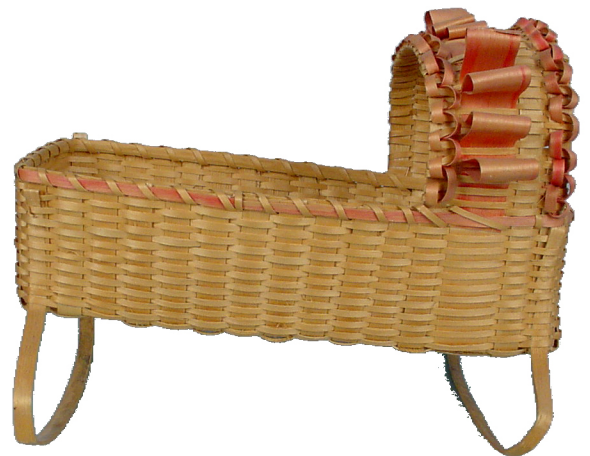
Brown Ash Curly Basket This basket has several rows of "curls." It also has a sweet grass binding and crowned with ash loops.

Vase This basket is usually woven over a jar. This one has porcupine weave and when stacked they are called “birds beak.”



Wall Pocket Basket This basket hangs on the wall and has diamond curls in three rows.

Cradle Basket These novelty baskets often had hand-made dolls with them. The basket is made from brown ash and has unique fancy weaves.





Fancy Purse This basket “purse” has several rows of fancy curls. The lid also has curls and the handle is made from unbraided sweetgrass.

Tatting or Yarn Basket

Yarn basket are usually taller. There is a hole in center of the lid for pulling string or yarn through.



Sweetgrass Pin Cushion

This is made from sweetgrass and brownash with a small clother cusion for pins.



Birchbark Napkin
Holder This item has
sweetgrass edging with
brown ash lashings with
birchbark sides and
bottom.

Large Hamper Basket This
is used for clothe storage.
Original use was for feath-
ers. In the 1800's these were
used as "feather baskets."



Market Basket This
basket is made from
heavy duty brown ash.

Waste Basket This has both dyed (green) brown ash and non dyed brown ash. The rim is sweetgrass. These waste baskets typically have a square bottom.



Hamper Basket This large basket is made from brown ash and has a large round handle.

Birchbark log carrier

This log carrier was made from “winter” birchbark. Winter bark enables you to etch designs in the bark.





Hex Weave Basket This basket was sometimes used a sifter. The spaces between the brown ash makes a hexagonal pattern.

Square-Bottom Sewing Basket This sewing basket is a very old style. The storage inserts are woven with the hex weave.



Flower Basket This basket has brown ash flower on the lid, braided sweetgrass, and diamond curls.

Hat Basket This basket has an ash flower and diamond curls. It is unlikely that these baskets were worn as hats.



Kettle Shaped Basket
This basket is made from brown ash and has the distinctive shape of a kettle.

Fishing Creel This basket is made from brown ash and is designed to hold fish while fishing. The hole in the lid to deposit the fish into the basket.





